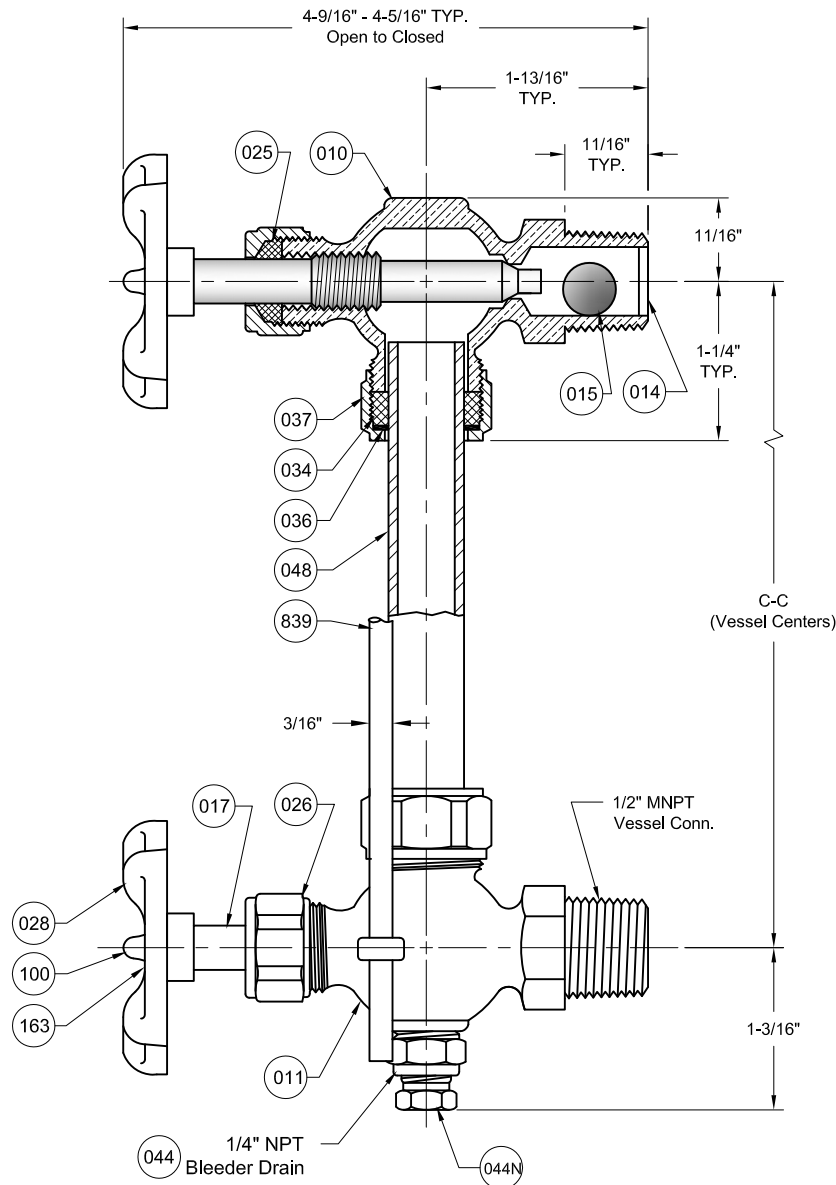


REVISIONS			
Rev.	Modification	Date	Done By
0	Original	2/22/2016	WAS
A	Gland is Non-Wetted, Drain Terminology	8/31/2016	WAS
B	Guard Rod Ø Added	3/21/2017	WAS
C	Bleeder Drain Added	1/26/2018	WAS
D	Added Part Number for Drain Needle	12/10/2018	NPH



BILL OF MATERIALS					
*Denotes an Optional, Non-Standard Material					
No.	Name of Part	Qty.	Material	Max. Temp. (°F)	Material Grade / Notes
010	Upper Valve	1	Bronze		ASTM B584
011	Lower Valve	1	Bronze		ASTM B584
014	Ball Check Retainer	2	SS		PH 15-7 Mo
015	Ball Check	2	Brass		ASTM B-16
017	Stem	2	Brass		ASTM B-16
025	Stem Packing	2	TFE/Hytpalon	400	
034	Gasket	2	EPDM	280	
			*Neoprene	250	
			*Viton®	400	
044	Bleeder Drain	1	Brass		ASTM B-16
044N	Drain Needle	1	Brass		ASTM B-16
048	Sight Glass/Tube	1	Cust. Specified		Upon Request
026	Stem Packing Nut	2	Brass		ASTM B-16
028	Handwheel	2	Aluminum		
036	Glass Packing Gland	2	Brass Plated Steel		
037	Glass Packing Nut	2	Brass		ASTM B-16
100	Handwheel Screw	2	Plated Steel		
163	Name Plate	1	Aluminum		
839	Guard Rods	2	304SS		Upon Request

PRODUCT SPECIFICATIONS						
Assembly Limited to Glass and Gasket Ratings						
Size MNPT	Liquid Service (PSIG)	Steam Service (PSIG)	Auto Ball Checks	Glass OD	Glass Length From Centers	Rod Length From Centers
1/2"	400 / 100°F to 200 / 400°F	NR	Yes	5/8"	- 1-1/4"	+3/4"

**T11 Series Configuration Choices:**

Reference the Series T11 Model Number Matrix on our Website or Inquire with our Sales Team

Viton® is a Registered Trademark of the Chemours Company

<b>JOHN C ERNST LLC.</b>		<a href="http://www.johnernst.com">www.johnernst.com</a>	
821 Gail Ct. Sparta, N.J. USA			
Series T11 Style 405 Liquid Level Gauge Assembly			
Sheet 1 of 1	Drawn By: WAS	Tolerances, unless otherwise noted	
Scale: NTS	Approved By: JCW	Dec.: ±0.015" Frac.: ±1/64" Ang.: ±1/2"	
Units: Inches	Date: 10-DEC-18	Dwg. No.: SC2.00T11.03.0.0	Size: A
			Rev. D