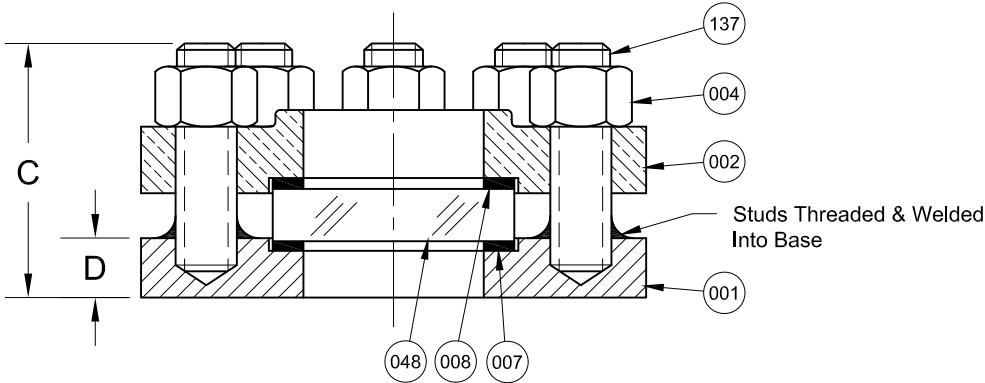


ASME CLASS 150 SERVICE PRESSURE/TEMP. RATINGS		
*Limited to Gasket & Glass Material		
Temp. (°F)	Pressure (PSIG)	
	CS	316SS
-20 to 100	285	275
150	270	255
200	260	235
250	245	225
300	230	215
350	215	205
400	200	195
450	185	180
500	170	170

\*Consult Sales for Higher & Lower Temps.

REVISIONS			
Rev.	Modification	Date	Done By
0	Original	6/9/2016	WAS
B	Updated Materials	4/13/2020	NPH
C	Added Weldpad Thickness	12/29/2021	NPH

BILL OF MATERIALS					
* - Denotes an Optional, Non-Standard Material					
No.	Name of Part	Qty.	Material	Max. Temp. (°F)	
Wetted	001	Weld Pad	1	Carbon Steel	
				316LSS	
	007	Gasket	1	Neoprene	250
				Soft PTFE	400
				*EPDM	250
				*Viton®	350
				*Graphite	500
*Non-Asbestos Fiber				500	
009	Shield (Opt.)	1	*Buna-N	200	
			*Mica V4		
048	Lens	1	Tempered Borosilicate	500	
Non-Wetted	002	Cover	1	Painted Steel	
				*316SS	
	004	Nuts	8	Plated Steel	
				*316SS	
008	Cushion	1	Non-Asbestos Fiber		
137	Studs	8	Black Oxide Coated Steel		
			*316SS		



PRODUCT SPECIFICATIONS										
Flange Size	A		B		C		D		Weight	
	In.	mm.	In.	mm.	In.	mm.	In.	mm.	lbs.	kg.
4	9	228.6	4-1/2	114.3	3-1/2	88.9	15/16	23.8	28.7	13.02
6	11	279.4	6-3/4	171.5	4-3/8	111.1	1	25.4	42.4	19.23
8	13-1/2	342.9	8-3/4	222.3	5-5/8	142.9	1-1/8	28.6	67.9	30.80

**W11 Series Configuration Choices:**

Reference the Series W11 Model Number Matrix on our Website or Inquire with our Sales Team

Viton® is a Registered Trademark of the Chemours Company

<b>JOHN C ERNST LLC.</b>		www.johnernst.com 21 Gail Ct. Sparta, N.J. USA		
				Series W11 Weld Pad High Pressure Sight Window 4" - 8"
Sheet: 1 of 1	Drawn By: WAS	Tolerances, unless otherwise noted Dec.: ±    Frac.: ±    Ang.: ±		Size: A
Scale: <b>NTS</b>	Approved By: JCW	Dwg. No.: SC2.00W11.01.1.0		Rev.: C
Dim.: Var.	Date: 20-FEB-20			