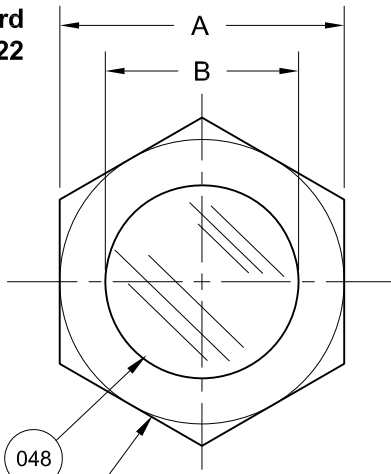
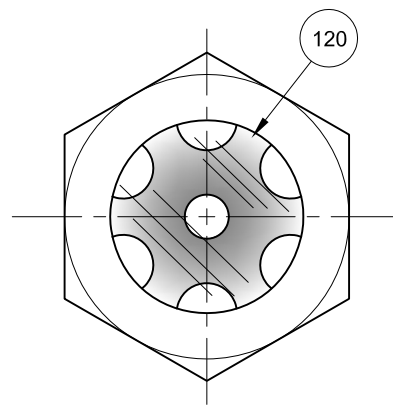


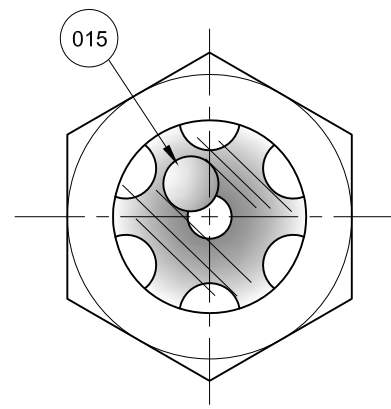
Standard Model 322



Optional Reflector

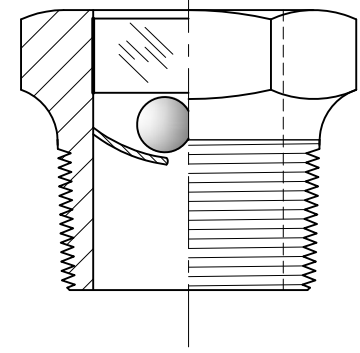
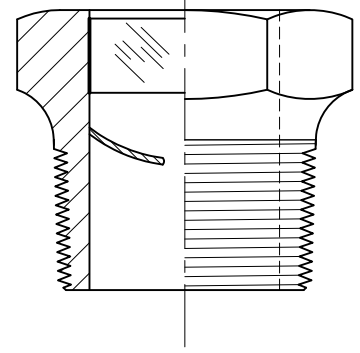
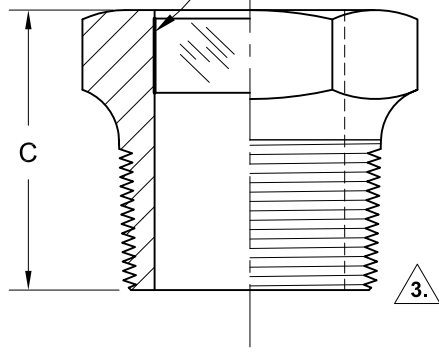


Optional Reflector & Ball



REVISIONS			
Rev.	Modification	Date	Done By

Glass Fused to Body Surface



Notes:

1. Suitable for Full Vacuum Service
30" of Hg. / 0 PSIA / 1 Atm.
2. Not Suitable for Steam Service
3. 3/8" & 3/4" are Male NPTF Dryseal & Require a Sealing Compound for Proper Seal.

BILL OF MATERIALS

* - Denotes an Optional, Non-Standard Material

No.	Name of Part	Qty.	Material
011	Body	1	Plated Steel
015	*Indicating Ball	1	Aluminum
048	Lens	1	Soda Lime
120	*Reflector	1	SS

PRODUCT SPECIFICATIONS

MNPT Size ₃	A		B		C		Weight		Rating @ 250°F	
	In.	mm.	In.	mm.	In.	mm.	oz.	kg.	PSIG	kPa
1/4	5/8	16	5/16	8	5/8	16	1	0.03	125	861
3/8 ₃	3/4	19	15/32	12	3/4	19	1	0.03	125	861
1/2	15/16	24	19/32	15	25/32	20	2	0.06	125	861
3/4 ₃	1-1/16	27	25/32	20	1-1/16	27	2	0.06	125	861
1	1-3/8	35	1	25	1-1/16	27	3	0.09	125	861
1-1/4	1-3/4	44	1-9/64	29	1-7/32	31	6	0.17	125	861
1-1/2	2	51	1-17/32	39	1-7/32	31	7	0.20	125	861
2	2-1/2	64	1-31/32	50	1-9/32	33	11	0.31	125	861

W16 Series Configuration Choices:

Reference the Series W16 Model Number Matrix on our Website or Inquire with our Sales Team

JOHN C ERNST LLC.

www.JOHNERNST.com
21 Gail Ct. Sparta, N.J. USA

Series W16 Fused Glass Sight Plug

Sheet: 1 of 1	Drawn By: WAS	Tolerances, unless otherwise noted Dec.: ± Frac.: ±1/32" Ang.: ±	Size: A
Scale: NTS	Approved By: JCW		Rev.: --
Dim.: Var.	Date: 05-APR-17	C2.00W16.02.0.0	