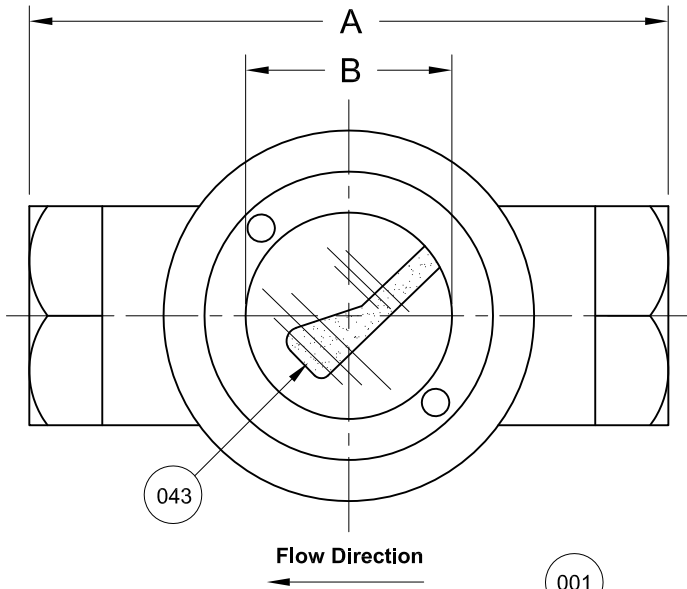
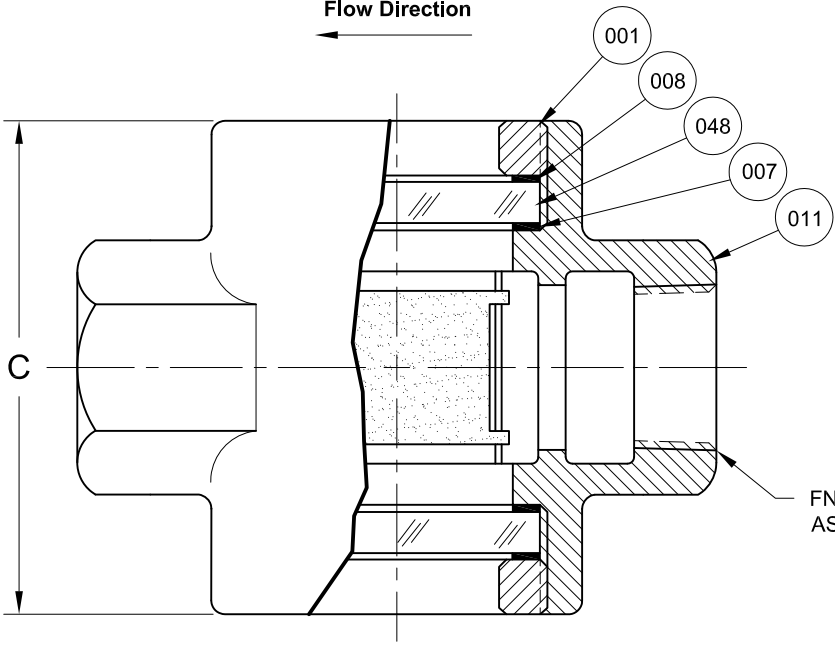


REVISIONS			
Rev.	Modification	Date	Done By
A	Added Flow Rates	2/1/2023	NPH



BILL OF MATERIALS
* - Denotes an Optional, Non-Standard Material

No.	Name of Part	Qty.	Material	Max. Temp. (°F)	Material Grade/Notes
011	Body	1	Carbon Steel		ASTM A-216 WCB
			Bronze	400	ASTM B62
			316SS		ASTM A-351 CF8M
007	Gasket	2	Neoprene	250	
			Gylon®	500	Gylon® 3545
			*EPDM	250	
			*Viton®	350	
			*Graphite	500	
			*Non Asbestos Fiber	500	
			*Buna-N	250	
048	Lens	2	Annealed Borosilicate	450	
			*Tempered Borosilicate	500	
043	Flapper Assembly	1	316SS		
008	Cushion	2	Non-Asbestos	500	
001	Retainer	2	Brass		ASTM B16
			*316LSS		ASTM A479
163	Nameplate	1	SS		Affixed to Unit (Not Pictured)



PRODUCT SPECIFICATIONS

FNPT Size ₂	A		B		C		Weight		Min Flow Horizontal ₃		Min Flow Vertical ₃		Max Flow Velocity _{3,4}	
	In.	mm.	In.	mm.	In.	mm.	lbs.	kg.	gpm	lpm	gpm	lpm	Ft/Sec	M/Sec
1/4 & 3/8	3	76	13/16	21	2	51	1-1/2	0.7	0.75	2.8	2	7.6	15	4.6
1/2	3-3/4	95	1-1/4	32	2-3/4	70	3	1.4	1.25	4.7	3	11.4	15	4.6
3/4	3-3/4	95	1-1/4	32	2-3/4	70	3	1.4	1.5	5.7	4	15.1	15	4.6
1	4-1/4	108	1-1/4	32	3-1/2	89	4	1.8	2	7.6	5	19	15	4.6
1-1/4	5-1/2	140	2	51	4-3/4	121	9	4.1	5	19	11	42	15	4.6
1-1/2	5-1/2	140	2	51	4-3/4	121	9	4.1	5	19	13	49	15	4.6
2	6-1/4	159	2	51	5	127	11	5.0	8	30	15	57	15	4.6

FNPT Per ASME B1.20.1

Notes:

- 1. Only** Carbon Steel & 316SS Bodies Conform to NACE MR0175 for Wetted NACE Service
- Female Socket Weld Connections Available (per ASME B16.11)
- Flow data is an Approximation based on ambient temperature water and is not a performance guarantee.
- Maximum Velocity is based on petroleum standard practices recommended pipe velocities.

S12B Series Configuration Choices:

Reference the Series S12B Model Number Matrix on our Website or Inquire with our Sales Team

Gylon® is a Registered Trademark of Garlock Sealing Technologies
Viton® is a Registered Trademark of The Chemours Company

JOHN C ERNST LLC.

www.JOHNERNST.com
21 Gail Ct. Sparta, N.J. USA

Series S12B Threaded Flapper Sight Flow Indicator - Type B

Sheet: 1 of 1	Drawn By: WAS	Tolerances, unless otherwise noted Dec.: ± Frac.: ± Ang.: ±	Size: A
Scale: NTS	Approved By: JCW		
Dim.: Var.	Date: 31-MAR-17	Dwg. No.: SC2.0S12B.02.0.0	Rev.: A