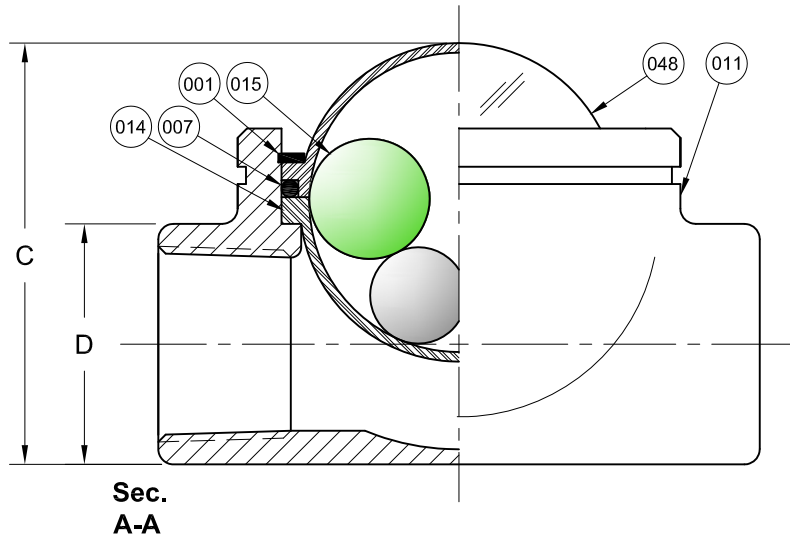


Bi-Directional



REVISIONS			
Rev.	Modification	Date	Done By

BILL OF MATERIALS				
No.	Name of Part	Qty.	Material	Notes
Wetted	011	1	Brass	
	007	1	Buna-N	
	014	1	Polycarbonate	Lexan®
	015	3	Acrylic/Polyethylene	
Non-Wet	048	1	Polycarbonate	Lexan®
	001	1	Plated Steel	
102	Mounting Ring (Opt.)	1	Plated Steel	(Not Pictured)

Ratings: 150 PSIG @ 120°F

PRODUCT SPECIFICATIONS											
FNPT Size	A		B		C ±1/16"		D ±1/16"		Weight		Flow Range
	In.	mm.	In.	mm.	In.	mm.	In.	mm.	lbs.	kg.	GPM
1/4 ₂	3-1/8	79.4	1-5/8	41.3	2-1/4	57.2	1-1/16	27.0	1.2	0.54	0.2 - 3
1/4	3-1/8	79.4	1-5/8	41.3	2-1/4	57.2	1-1/16	27.0	1.2	0.54	0.4 - 5
3/8	3-1/8	79.4	1-5/8	41.3	2-1/4	57.2	1-1/16	27.0	1.1	0.50	1.5 - 7.5
1/2	3-1/8	79.4	1-5/8	41.3	2-1/4	57.2	1-7/32	31.0	1.2	0.54	2.5 - 10
3/4	3-1/8	79.4	1-5/8	41.3	2-1/4	57.2	1-5/16	33.3	1.2	0.54	4 - 15
1	3-1/8	79.4	1-5/8	41.3	2-9/16	65.1	1-9/16	39.7	1.4	0.64	5 - 24

Notes:

- Not for Use in Vertical Downflow Applications
- 2. Low Flow Option for 1/4" Size Only

S17B Series Configuration Choices:

Reference the Series S17B Model Number Matrix on our Website or Inquire with our Sales Team

Lexan® is a Registered Trademark of General Electric Co., USA

JOHN C. ERNST Co., INC.		www.JOHNERNST.com 21 Gail Ct. Sparta, N.J. USA	
Series S17B Agitating Ball Type Sight Flow Indicator			
Sheet: 1 of 1	Drawn By: WAS	Tolerances, unless otherwise noted Dec.: ± Frac.: ±1/32" Ang.: ±	Size: A
Scale: NTS	Approved By: JCW		Rev.: --
Dim.: Var.	Date: 27-JAN-17	Dwg. No.: SC2.0S17B.00.0.0	