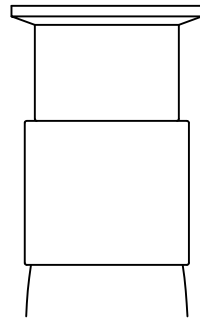
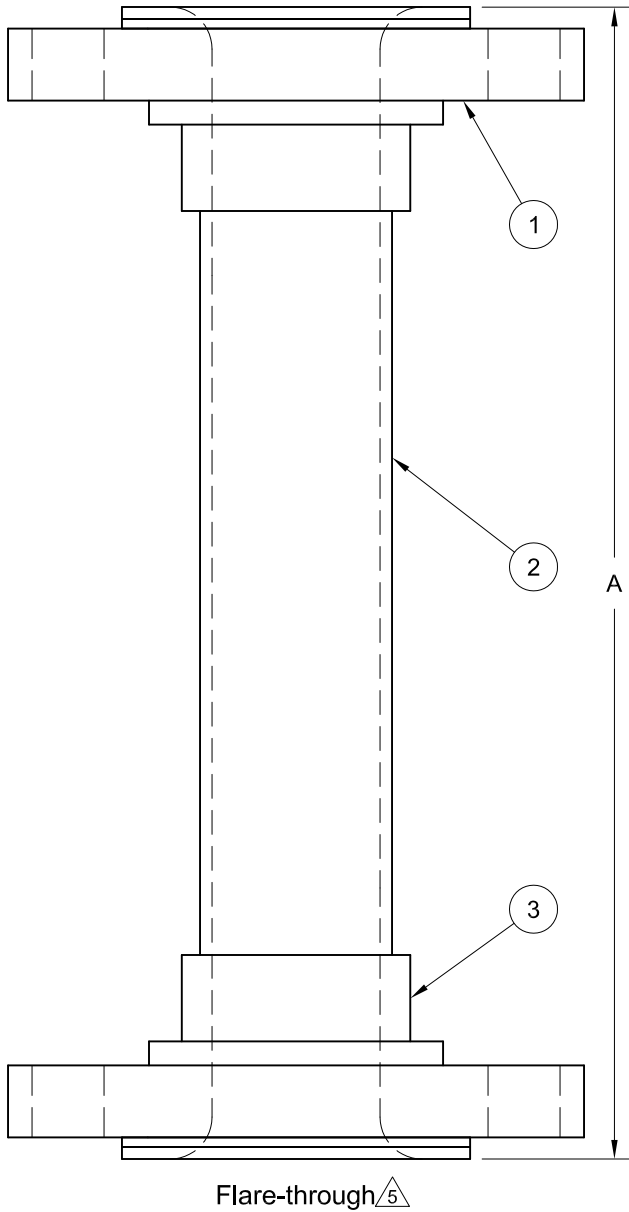
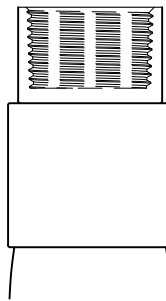


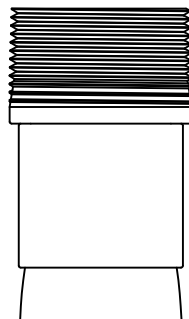
REVISIONS			
Rev.	Modification	Date	Done By



Triclamp



Female NPT



Male NPT

**Connections Available:**

- Tri-clamp
- Male NPT
- Female NPT
- Flare-through Swivel Flange
- All available in sizes 1/2" to 2"**
- Contact John C Ernst for size 3" or 4" Availability

**PRODUCT SPECIFICATIONS**

Size	Wall Thickness	PSIG @ 70°F	PSIG @ 150°F	PSIG @ 200°F	PSIG @ 250°F	PSIG @ 300°F
1/2"	0.100"	150	120	105	90	79
3/4"	0.100"	150	120	105	90	79
1"	0.125"	150	120	105	90	79
1-1/2"	0.125"	150	120	105	90	79
2"	0.125"	100	80	69	60	52
3"	0.145"	50	40	35	30	27
4"	0.150"	25	20	18	15	13

**BILL OF MATERIALS**

No.	Name of Part	Qty.	Material	Max. Temp. (°F)
1	Connection	2	Stainless Steel*	
2	Sight Tube	1	FEP	300
3	Collar	2	316 SS	

\* - Flare-through flanges are 304 Stainless, all others are 316 Stainless

**Notes:**

1. Suitable for Full Vacuum Service @ 70°F
2. Customer Specific Overall Length, "A" Dimension, up to 20' long
3. Overall Length tolerance of ±1/4"
4. Consult a Sales representative if "A" Dimension is under 13.5"
5. Flare-through wetted material is FEP tubing only, Flanges are 304SS

**S24C Series Configuration Choices:**

Reference the Series S24C Model Number Matrix on our Website or Inquire with our Sales Team

**JOHN C ERNST LLC.**

www.johnernst.com  
21 Gall Ct. Sparta, N.J. USA

Series S24C Full View Sight Gauge

Sheet: 1 of 1	Drawn By: NPH	Tolerances, unless otherwise noted Dec.: ±    Frac.: ±    Ang.: ±	Size: A
Scale: <b>NTS</b>	Approved By: JCW		Rev.: --
Dim.: Var.	Date: 17-APR-19	Dwg. No.: SC2.0S24C.00.0.0	