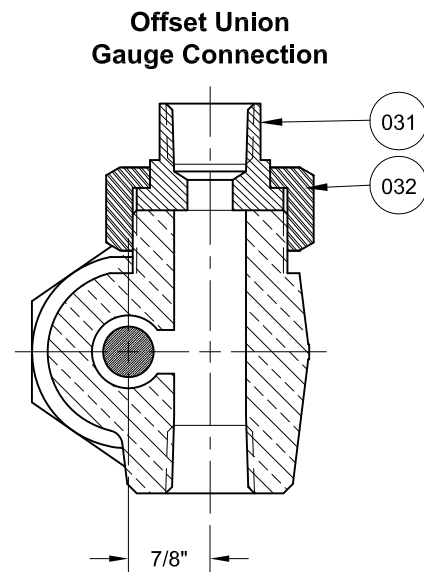
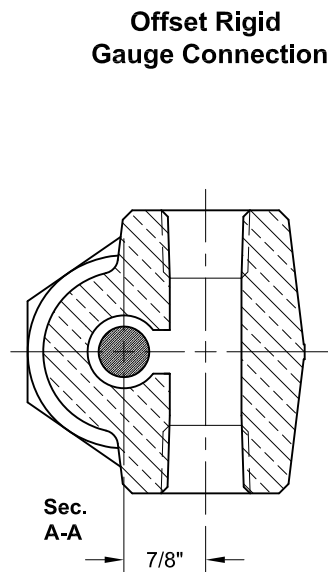
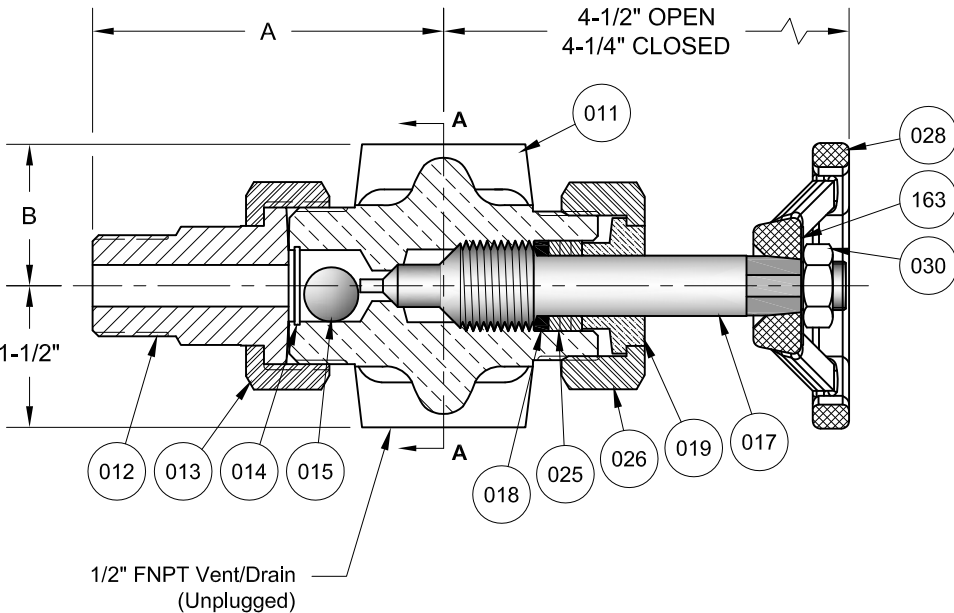


REVISIONS			
Rev.	Modification	Date	Done By



## STAINLESS STEEL BODIES 2 Valves / Set

### PRODUCT SPECIFICATIONS

Vessel Conn. 1 (MNPT)	Gauge Conn. 1 Type	Gauge Conn. 1 (FNPT)	Pressure Ratings (PSIG) 2	A Dimension		B Dimension		
				In.	mm.	In.	mm.	
1/2"	Rigid	1/2"	<b>Steam</b> Not Recommended	3-11/16	94	1-1/2	38	
3/4"				3-11/16	94	1-1/2	38	
1"				4-1/8	105	1-1/2	38	
1/2"	Union			<b>Non-Steam</b> 2400 @ 100°F 1323 @ 800°F	3-11/16	94	2-11/16	68
3/4"					3-11/16	94	2-11/16	68
1"					4-1/8	105	2-11/16	68

### BILL OF MATERIALS

Item No.	Name of Part	Qty.	Material	Material Grade / Notes
011	Valve Body	1	316LSS	ASTM A182 Gr. F316L
012	Tailpipe	1	316/316LSS	
014	Ball Check Retainer	1	316SS	
015	Ball Check	1	316SS	QQ-S-763
017	Stem	1	316/316LSS	ASTM A479
018	Stem Packing Retainer	1	316/316LSS	ASTM A479
025	Stem Packing	3	Graphite	
031	Gauge Tailpipe	1	316/316LSS	
013	Vessel Union Nut	1	Carbon Steel	ASTM A108
019	Stem Packing Gland	1	Carbon Steel	ASTM A108
026	Stem Packing Nut	1	Carbon Steel	ASTM A108
028	Handwheel	1	Carbon Steel	
030	Handwheel Nut	1	Carbon Steel	ASTM A563
032	Gauge Union Nut	1	Carbon Steel	ASTM A108 (Union Opt. Only)
163	Tag	1	304SS	

### S Series Configuration Choices:

Reference the Series S Model Number Matrix on our Website or Inquire with our Sales Team

### KEY NOTES:

- Please Inquire for Other Gauge & Vessel Connection Sizes & Types
- Limited to Gauge Pressure Rating

## JOHN C ERNST LLC.

www.JOHNERNST.com  
21 Gail Ct. Sparta, N.J. USA

Series V11B Style 450 High Pressure Offset Valves - 316SS

Sheet: 1 of 1	Drawn By: TWW	Tolerances, unless otherwise noted Dec.: ±    Frac.: ±    Ang.: ±	Size: A
Scale: NTS	Approved By: GEW		Dim.: Var.
Dwg. No.: SC2.0V11B.00.0.1		Rev.: --	