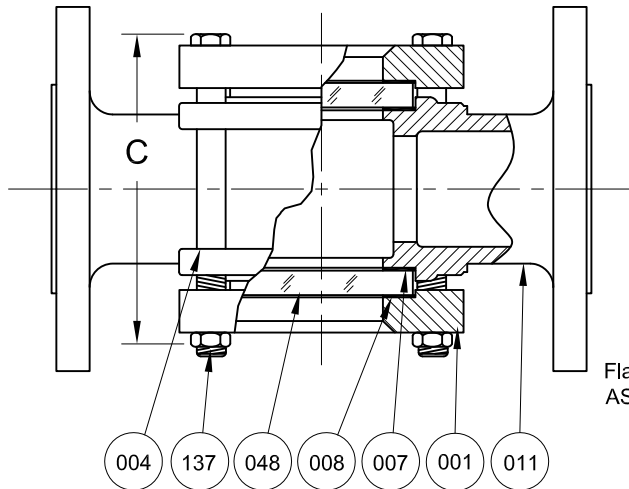
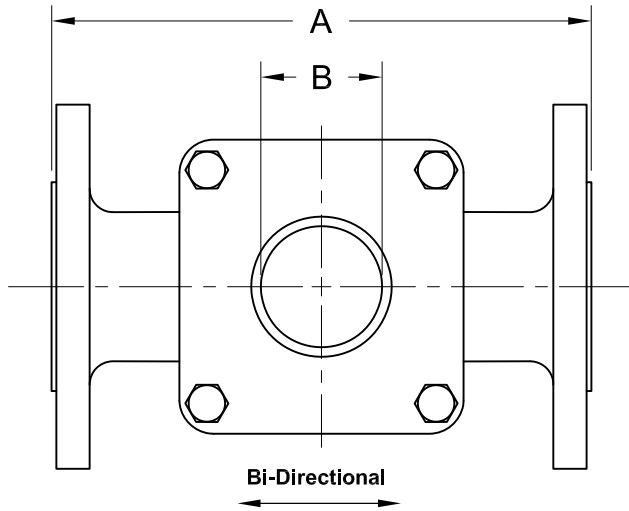


REVISIONS			
Rev.	Modification	Date	Done By



Flange Conn. Per  
ASME B16.5 150#

### BILL OF MATERIALS

\* - Denotes an Optional, Non-Standard Material

No.	Name of Part	Qty.	Material	Max. Temp. (°F)	Material Grade
011	Body	1	Carbon Steel		ASTM A-216 WCB
			316SS		ASTM A-351 CF8M
007	Gasket	2	Neoprene	250	
			Gylon®	500	Gylon® 3504
			*EPDM	250	
			*Viton®	350	
			*Graphite	500	
			*Non Asbestos	500	Klinger C-4400
048	Lens	2	Tempered Boro.	500	
008	Cushion	2	Non-Asbestos	500	Klinger C-4400
001	Retainer <sub>1</sub>	2	Steel		ASTM A-216 WCB
			316SS		ASTM A-351 CF8M
137	Stud	4	Plated Steel		SAE Gr. 5
			*316SS		ASTM A193-B8M
004	Nut	4	Plated Steel		SAE Gr. 5
			*316SS		ASTM A194-8M

1. Retainers & Body are the Same Material

### PRODUCT SPECIFICATIONS

Flange Size	A		B		C		Weight		Rating
	In.	mm.	In.	mm.	In.	mm.	lbs.	kg.	(PSIG)
8	16-1/8	410	8-1/4	210	16-7/8	429	230	104.3	150

\*8" Units are 150 PSIG Max

### S14FC Series Configuration Choices:

Reference the Series S14FC Model Number Matrix on our Website or Inquire with our Sales Team

Gylon® is a Registered Trademark of Garlock Sealing Technologies  
Viton® is a Registered Trademark of E.I. DuPont de Nemours Co. Inc.

**JOHN C ERNST LLC.**

www.JOHNERNST.com  
21 Gall Ct. Sparta, N.J. USA

Series S14FC Sight Flow Indicator - Plain 150# Flanged

Sheet 1 of 1	Drawn By WAS	Tolerances, unless otherwise noted Dec.: ±    Frac.: ±    Ang.: ±	Size: A
Scale: NTS	Approved By: JCW		
Date: 09-SEP-16	Dwg. No.: SC2.S14FC.00.1.0		Rev. --