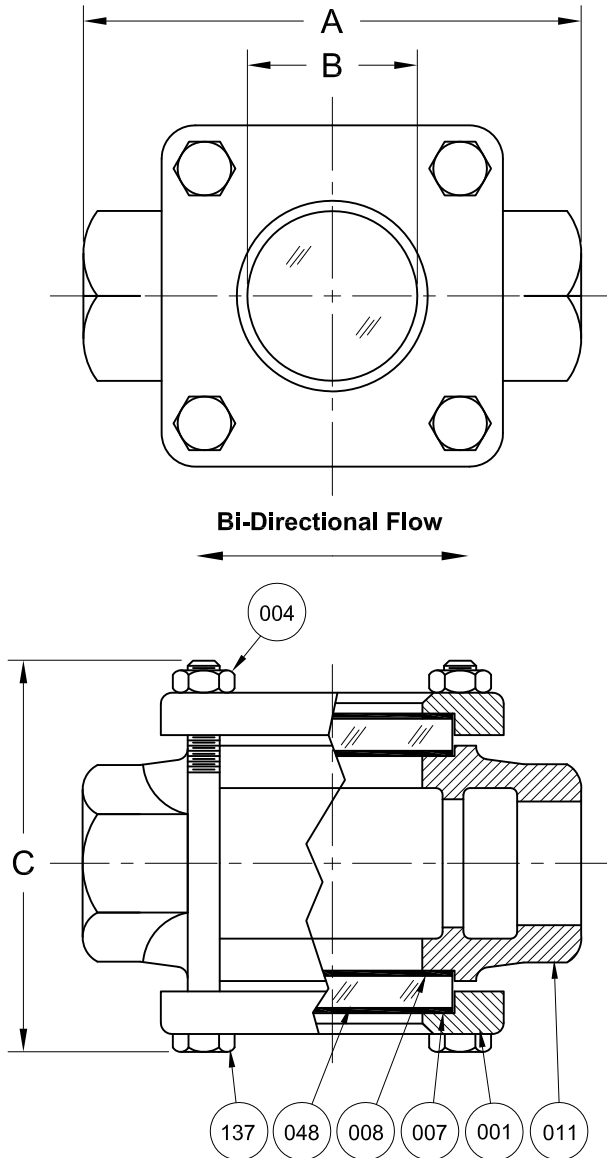


REVISIONS			
Rev.	Modification	Date	Done By
A	Updated Materials	10/10/2022	NPH



ASME CLASS 150 SERVICE PRESSURE/TEMP. RATINGS
*Limited to Gasket & Glass Material

Temp. (°F)	Pressure (PSIG)		
	CS	316SS	Bronze
-20 to 100	285	275	225
150	270	255	225
200	260	235	210
250	245	225	195
300	230	215	180
350	215	205	165
400	200	195	150
450	185	180	N/R
500	170	170	N/R

*Consult Sales for Higher & Lower Temps.

BILL OF MATERIALS
* - Denotes an Optional, Non-Standard Material

No.	Name of Part	Qty.	Material	Max. Temp. (°F)	Material Grade
011	Body	1	Painted Carbon Steel		ASTM A216 WCB
			Bronze		ASTM B62
			316SS		ASTM A351 CF8M
007	Gasket	2	Neoprene	250	
			Gylon®	500	Gylon® 3545
			*EPDM	250	
			*Viton®	350	
			*Graphite	500	
			*Non Asbestos	500	
			*Buna-N	250	
048	Lens	2	Tempered Boro.	500	
008	Cushion	2	Non-Asbestos	500	
001	Retainer	2	Zinc Plated Carbon Steel		Electro-Galvanized
			*316SS		ASTM A240
			Yellow Zinc Plated Steel		ASTM A354-BD
			*316SS		ASTM A193-B8M
137	Stud	4	Yellow Zinc Plated Steel		ASTM A194-2H
004	Nut	4	Yellow Zinc Plated Steel		ASTM A194-2H
			*316SS		ASTM A194-8M

PRODUCT SPECIFICATIONS

FNPT Size	A		B		*C		Weight	
	In.	mm.	In.	mm.	In.	mm.	lbs.	kg.
1/4 & 3/8	3	76	13/16	21	3-1/2	89	5	2.3
1/2 & 3/4	3-3/4	95	1-1/4	32	4	102	6	2.7
1	4-1/4	108	1-1/4	32	4-1/2	114	8	3.6
1-1/4 & 1-1/2	5-1/2	140	2	51	5-3/4	146	13	5.9
2	6-1/4	159	2	51	6-3/4	171	19	8.6

*Standard Bolt Length Shown in "C" Dimension

S14TB Series Configuration Choices:

Reference the Series S14TB Model Number Matrix on our Website or Inquire with our Sales Team

Gylon® is a Registered Trademark of Garlock Sealing Technologies
Viton® is a Registered Trademark of the Chemours Company

JOHN C ERNST LLC.			www.JOHNERNST.com 21 Gail Ct. Sparta, N.J. USA	
Series S14TB Sight Flow Indicator - Plain 150# Threaded				
Sheet 1 of 1	Drawn By WAS	Tolerances, unless otherwise noted Dec.: ± Frac.: ± Ang.: ±		Size: A
Scale: NTS	Approved By GEW			
Date: 25-FEB-16	Dwg. No.: SC2.S14TB.00.0.0			Rev. A