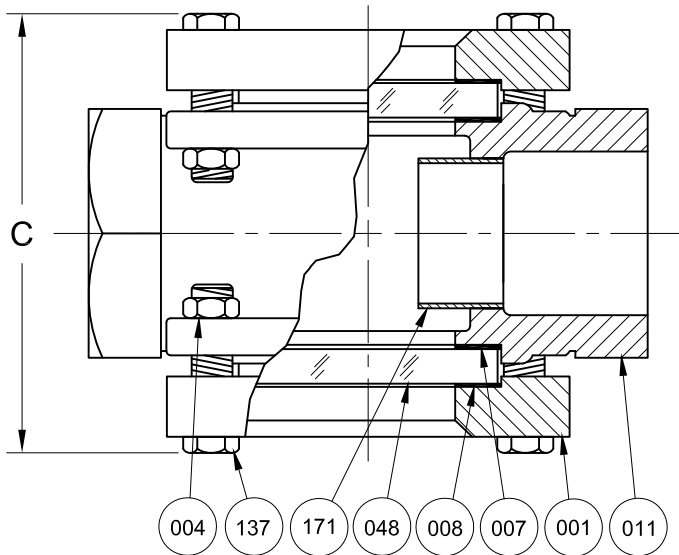


**ASME CLASS 150 SERVICE PRESSURE/TEMP. RATINGS**  
 \*Limited to Gasket & Glass Material

Temp. (°F)	Pressure (PSIG)	
	CS	316SS
-20 to 100	285	275
150	270	255
200	260	235
250	245	225
300	230	215
350	215	205
400	200	195
450	185	180
500	170	170

\*Consult Sales for Higher & Lower Temps.



REVISIONS			
Rev.	Modification	Date	Done By

**BILL OF MATERIALS**  
 \* - Denotes an Optional, Non-Standard Material

No.	Name of Part	Qty.	Material	Max. Temp. (°F)	Material Grade
011	Body	1	Carbon Steel		ASTM A-216 WCB
			316SS		ASTM A-351 CF8M
007	Gasket	2	Neoprene	250	
			Gylon®	500	Gylon® 3504
			*EPDM	250	
			*Viton®	350	
			*Graphite	500	
			*Non Asbestos	500	Klinger C-4400
048	Lens	2	Tempered Boro.	500	
171	Indicator (Drip Tube)	1	316SS		
008	Cushion	2	Non-Asbestos	500	Klinger C-4400
001	Retainer <sub>1</sub>	2	Carbon Steel		ASTM A-216 WCB
			316SS		ASTM A-351 CF8M
137	Stud	8	Plated Steel		SAE Gr. 5
			*316SS		ASTM A193-B8M
004	Nut	8	Plated Steel		SAE Gr. 5
			*316SS		ASTM A194-8M

1. Retainers are the Same Material as the Body

**PRODUCT SPECIFICATIONS**

FNPT Size	A		B		C		Weight	
	In.	mm.	In.	mm.	In.	mm.	lbs.	kg.
1/2 & 3/4	3-3/4	95	1-1/4	32	3-7/8	98	6	2.7
1	4-1/4	108	1-1/4	32	4-1/8	105	11	5.0
1-1/2	5-1/2	140	1-3/4	44	5-3/8	137	12	5.4
2	6-1/4	159	2	51	6-1/8	156	17	7.7

**S14TC Series Configuration Choices:**

Reference the Series S14TC Model Number Matrix on our Website or Inquire with our Sales Team

Gylon® is a Registered Trademark of Garlock Sealing Technologies  
 Viton® is a Registered Trademark of the Chemours Company

<b>JOHN C ERNST LLC.</b>		www.JOHNERNST.com 21 Gall Ct. Sparta, N.J. USA		
				Series S14TC Sight Flow Indicator - Drip Tube - 150# Threaded
Sheet 1 of 1	Drawn By WAS	Tolerances, unless otherwise noted Dec.: ±    Frac.: ±    Ang.: ±		Size: A
Scale: NTS	Approved By JCW			
Date: 27-MAY-16	Dwg. No.: SC2.S14TC.04.0.0			Rev. --