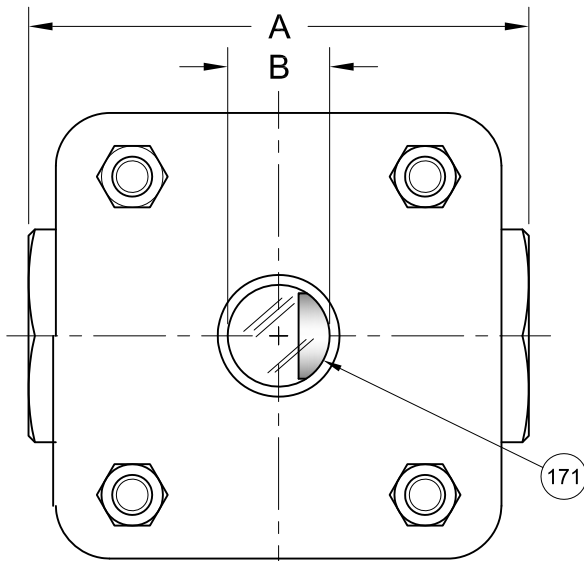


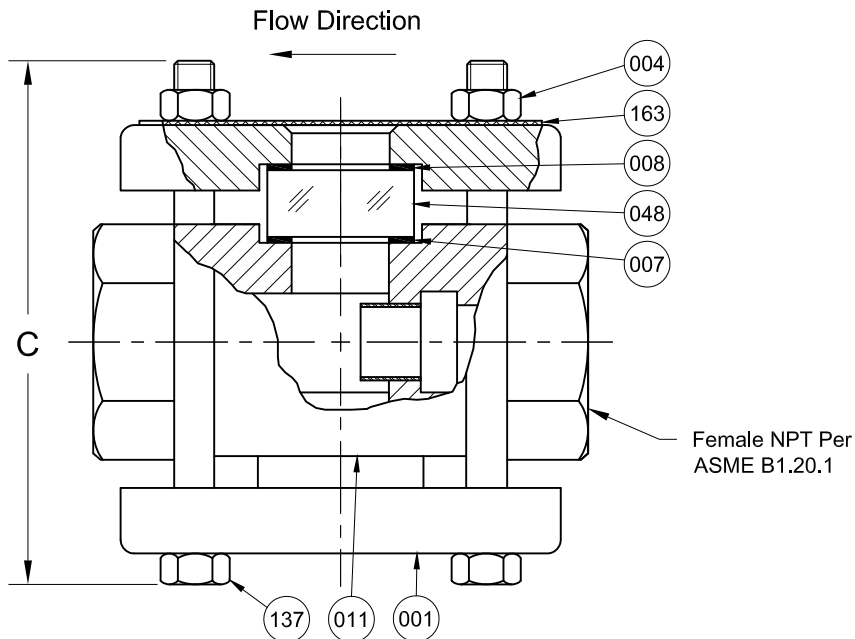
REVISIONS			
Rev.	Modification	Date	Done By



ASME CLASS 300 SERVICE PRESSURE/TEMP. RATINGS		
*Limited to Gasket & Glass Material		
Temp. (°F)	Pressure (PSIG)	
	CS	316SS
-20 to 100	740	720
150	705	670
200	675	620
250	665	590
300	655	560
350	645	535
400	635	515
450	615	495
500	600	480

*Consult Sales for Higher & Lower Temps.

BILL OF MATERIALS					
* - Denotes an Optional, Non-Standard Material					
No.	Name of Part	Qty.	Material	Max. Temp. (°F)	Material Grade / Notes
Wetted	011	1	Painted Carbon Steel		ASTM A216-WCB
			316SS		ASTM A351-CF8M
	007	2	Neoprene	250	
			Gylon®	500	Gylon® 3545
			*Viton®	350	
			*Graphite	500	
			*Non Asbestos	500	IFG-5500
048	Lens	2	Tempered Boro.	500	
171	Drip Tube	1	316SS		
Non-Wetted	001	2	Electro-Galvanized Zinc Plated Carbon Steel		ASTM A216-WCB or ASTM A516 GR.70
			*316SS		
	004	4	Yellow Zinc Plated Steel		ASTM A194-2H
			*316SS		
	008	Cushion	2	Non-Asbestos	500
137	Stud	4	Yellow Zinc Plated Steel		ASTM A354-BD
163	Name Plate	1	SS		



PRODUCT SPECIFICATIONS								
FNPT Size	A		B		C ₁		Weight	
	In.	mm.	In.	mm.	In.	mm.	lbs.	kg.
1/4	3	76	27/32	21	3-1/4	83	6.0	2.7
3/8	3	76	27/32	21	3-1/4	83	6.0	2.7
1/2	3-3/4	95	1-1/16	27	4-1/4	108	8.4	3.8
3/4	3-3/4	95	1-1/16	27	4-1/4	108	8.4	3.8
1	4-1/4	108	1-3/8	35	4-3/4	121	9.6	4.4
1-1/4	5-1/2	140	2	51	7-1/4	184	15.6	7.1
1-1/2	5-1/2	140	2	51	7-1/4	184	15.6	7.1
2	6-1/4	159	2	51	7-1/4	184	15.6	7.1

KEY NOTES:

- Standard Bolt Length Shown in "C" Dimension (±1/8")
- Dual Window & Fused Glass Options Available by Request
- In Accordance with NACE MR-01-75 & ISO15156-1 for Wetted Materials

S16TB Series Configuration Choices:

Reference the Series S16TB Model Number Matrix on our Website or Inquire with our Sales Team

Gylon® is a Registered Trademark of Garlock Sealing Technologies
 Viton® is a Registered Trademark of the Chemours Company

JOHN C ERNST LLC.		www.johnernst.com 21 Gail Ct. Sparta, N.J. USA	
Sheet: 1 of 1	Drawn By: WAS	Tolerances, unless otherwise noted Dec.: ± Frac.: ± Ang.: ±	
Scale: NTS	Approved By: GEW	Size: A	
Dim.: Var.	Date: 05-MAR-18	Dwg. No.: SC2.S16TB.05.0.0	Rev.: --