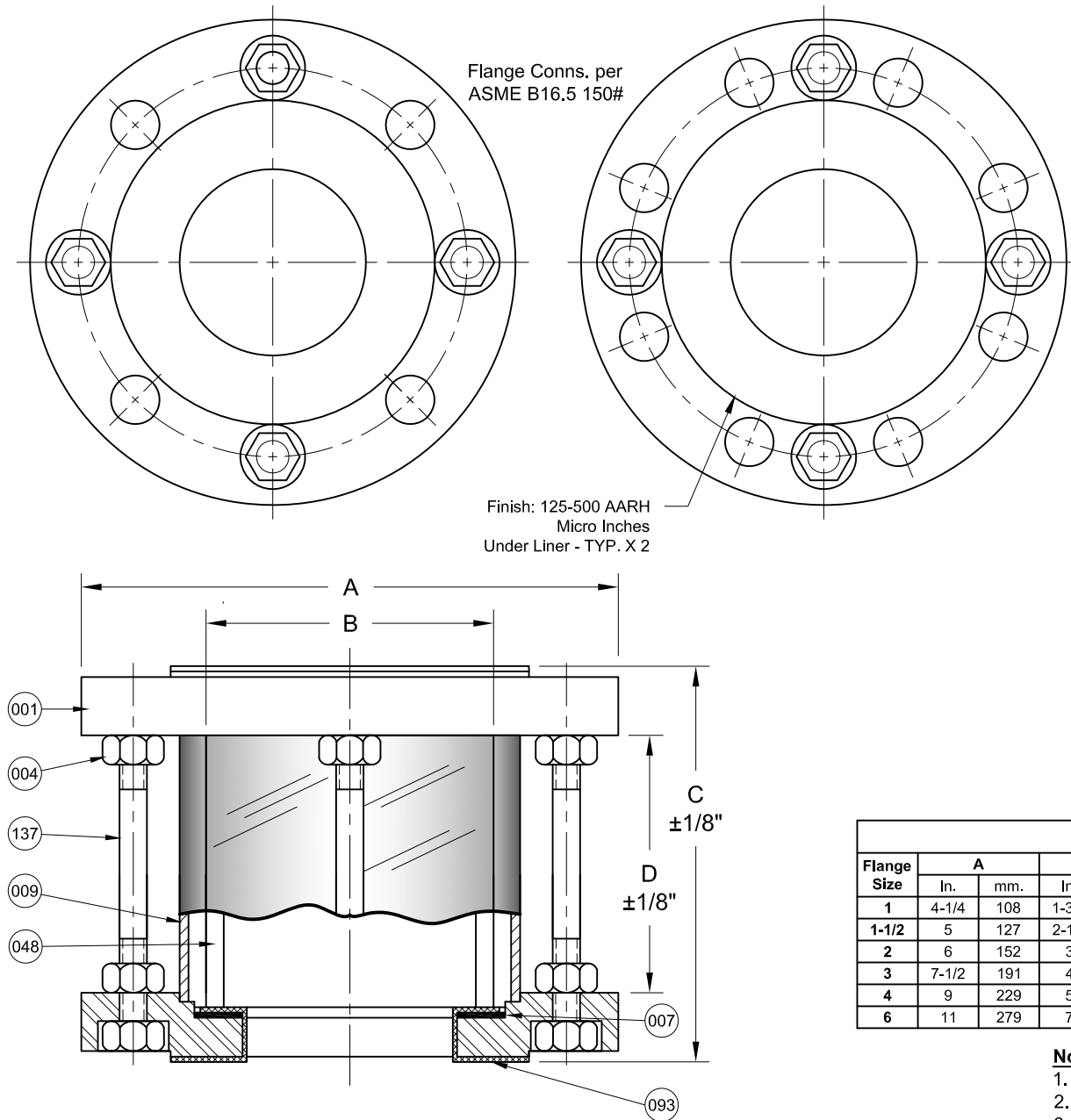


Hole Pattern 1/2" - 3" Sizes

Hole Pattern 4" - 6" Sizes

Flange Conns. per
ASME B16.5 150#

Finish: 125-500 AARH
Micro Inches
Under Liner - TYP. X 2



S18FL Series Configuration Choices:

Reference the Series S18FL Model Number Matrix on our Website or Inquire with our Sales Team

Lexan® is a Registered Trademark of General Electric Co. USA

BILL OF MATERIALS

* - Denotes an Optional, Non-Standard Material

	No.	Name of Part	Qty.	Material	Max. Temp. (°F)	Material Grade / Notes
Wetted	048	Lens	1	Annealed Boro.	446	
	093	Liner	2	PTFE	400	
Non-Wetted	001	150# Flanges	2	Zinc Plated Carbon Steel 316SS		ASTM A36 ASTM A182
	007	Gasket	2	Non Asbestos	400	
	009	Exterior Shield	2	Lexan®	271	
	137	Stay Rod	4	18-8SS		
	004	Nut	16	304SS		

PRODUCT SPECIFICATIONS

Flange Size	A		B		C ₃		D ₃		Weight		Rating @ Dim. "C", (PSIG)		
	In.	mm.	In.	mm.	In.	mm.	In.	mm.	lbs.	kg.	Std. (or Less)	Std. - 12"	12" - 18"
1	4-1/4	108	1-3/4	44	4-1/8	105	2-7/8	73	5	2.3	140	70	Atm.
1-1/2	5	127	2-1/2	64	4-1/8	105	2-5/8	67	6	2.7	105	105	50
2	6	152	3	76	4-7/8	124	3-1/8	79	12	5.4	75	75	75
3	7-1/2	191	4	102	5-1/2	140	3-5/8	92	19	8.6	65	65	65
4	9	229	5	127	7-5/8	194	5-11/16	144	22	10.0	45	45	45
6	11	279	7	178	10-1/2	267	8-9/16	217	56	25.4	35	35	35

Notes:

1. Assembly Ratings are Limited to Glass & Gasket Ratings
2. Not Suitable for Full Vacuum
3. Inquire for Longer C & D Lengths

REVISIONS

Rev.	Modification	Date	Done By
A	Removed Cushion	3/22/2023	NPH

This Drawing and the Subject Matter Disclosed Therein is the Property of John C Ernst LLC. It is Not to be Copied, Used, Appropriated or Disclosed to Others Without the Expressed Permission of John C Ernst LLC.



www.johnernst.com • 21 Gail Ct Sparta NJ USA

Series S18FL PTFE-Lined Sight Flow Indicator - Full Veiw - 150# RF Flanged

Sheet: 1 of 1	Drawn By: NPH	Tolerances, unless otherwise noted Dec.: ± Frac.: ±1/16 Ang.: ±	Size: A
Scale: NTS	Approved By GEW		Rev.: A
Dim.: Var.	Date: 10-OCT-22	Dwg. No.: SC2.S18FL.00.0.0	